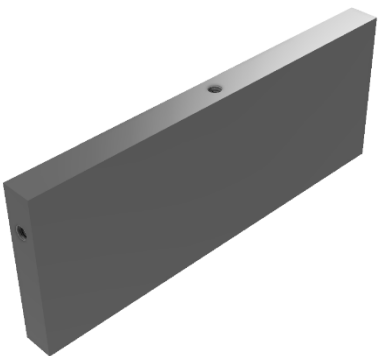
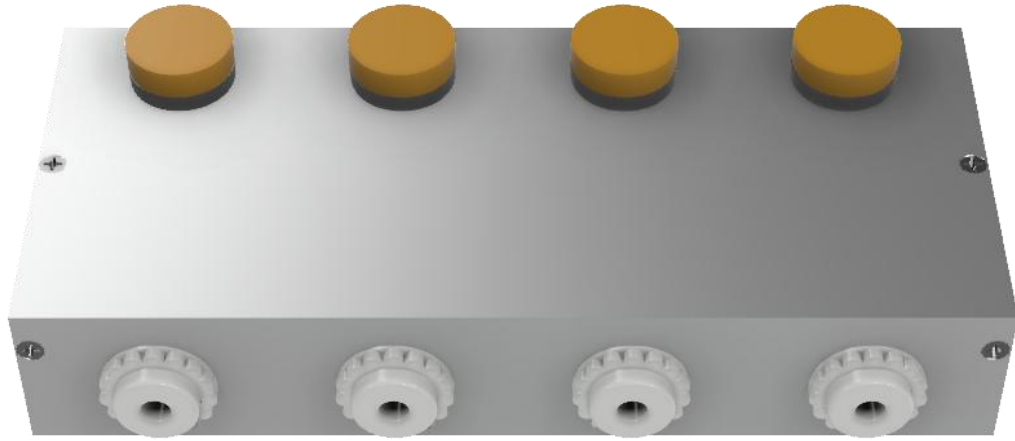



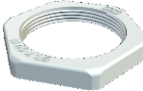


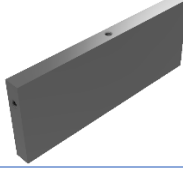



tous les perçages : \varnothing 3.3mm
et ensuite taraudage M4
Cette pièce est à réaliser en
double exemplaire





Description	Pièces	Image
Lampe de signalisation 230V	4	
Terminal de connexion lumineaire	4	
Passe-câble M25	4	
Ecrou M25	4	
Vis à tôle 3,5x15	8	
Vis à tête fraisée M4x16	8	
Pièce latérale (146x41x8mm)	2	
Pièce inférieure (250x148x2mm)	1	
Covercle (250x152x2mm)	1	